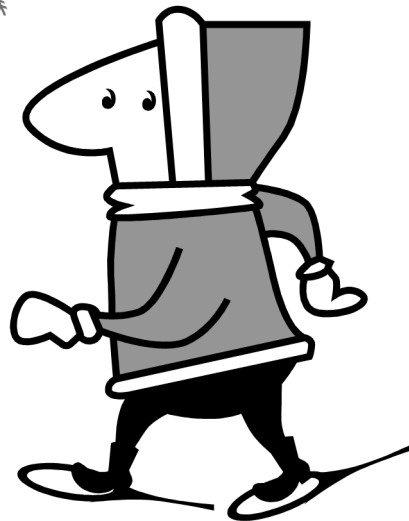


Heckrodt Wetland Reserve includes 76 acres of forested wetland, wetland meadow, open water, and upland field communities. The wheelchair & stroller- friendly 3+ mile trail system includes a boardwalk trail that allows access to the wetland without getting wet feet! The Reserve is home to a variety of mammals, birds, insects, reptiles, and amphibians. Facilities include a nature center with indoor living wetland and live reptiles, amphibians, and fish, as well as mounted specimens of Wisconsin mammals and bird species. Educational programs are provided for schools, daycares, special focus groups (pre-school, grade school, and senior citizens), and the general public. Our goal is to provide visitor education while fostering an ethic of environmental stewardship in a fun, hands-on atmosphere.



## Appleton Area School District Winter School Field Trips Offered December - March



1305 Plank Road  
Menasha, WI 54952

For info call...920-720-9349  
Visit us on the web  
[www.heckrodtnaturecenter.org](http://www.heckrodtnaturecenter.org)



1305 Plank Road  
Menasha, WI 54952

Phone: 920-720-9349  
[www.heckrodtnaturecenter.org](http://www.heckrodtnaturecenter.org)

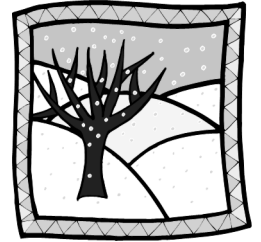
### School Programs at Heckrodt...

- Programs are designed to be 2 hour sessions, unless otherwise noted. All Kindergarten programs are 1 1/2 hours.
- Programs will run rain or shine.
- Program fee is \$3.00 per student (10 student minimum.)
- If you are combining Wildlife Wonders with Winter Wonderland Walk, the fee is still \$3.00/student for both programs.
- Limit of 10 adults (including teachers) for groups of 30 students or less and limit of 20 adults (including teachers) for groups over 30 students. An additional fee of \$3.00/adult will be charged after adult limit is reached.
- No younger siblings please!
- Dates fill quickly on a first come, first serve basis. Please book your field trip early!

For more information, or to schedule a program, please call 920-720-9349 or e-mail [heatherw@heckrodtnaturecenter.org](mailto:heatherw@heckrodtnaturecenter.org)

Heckrodt Wetland Reserve is open all year and offers school programs September through May.

OR...Let us come visit you! We also do classroom naturalist programs December through March.



### Your field trip experience....

Our naturalist educators offer child-friendly and hands-on activities for school students. Designed with age-appropriate experiences, these programs can be adapted to suit your curricular needs. Just let us know!

You will receive a written confirmation, as well as an enrichment packet full of pre- and post-activity ideas to enhance your field experience.

We now offer a Breakout Box for students with sensory sensitivities that can be checked out during your program.

## Heckrodt's Mission...

is to enhance, restore, and preserve the Reserve and educate all people in the importance of conserving our natural resources while promoting the Reserve's many recreational opportunities.



Printed on paper containing 30% post consumer fiber

# Program Options

## Wildlife Wonders

Grades 4K-8

These programs offer a glimpse into the life of the animals that may live in a wetland. Puppetry and stories are included in these programs. For older students, scientific discovery will help them learn and understand the special relationships between humans and wildlife. Choose one of the following animal options: deer, bear, raccoon, wolf, fox, backyard birds, owls, groundhog, bald eagle, pelican, honeybees.



\*\*for 4K-4th we suggest you combine one of our Wildlife Wonders programs with Winter Wonderland Walk.

\$3.00/student

AASD Science Standards F4.1; F.4.2; F.4.3; F.4.4; F.8.2; F.8.6



## Next Generation Science Standards

All of our programs are now aligned with the with the Next Generation Science Standards.

Ask for more details.

## Make Tracks!

Grades 4K-3

Students will become nature detectives, unraveling some tracking mysteries. Then, experience the wetland in a unique way! We will strap on snowshoes and go out on the Reserve to look at winter animal tracks and other animal signs. Making plaster animal tracks is optional. Snowshoeing option is available for this program. (Please request snowshoeing option at the time of program booking.)

\$3.00/student\*

\*Additional \$.50/student to make plaster animal tracks.

AASD Science Standards F.4.1; F.4.2; F.4.4



## Winter Ecology

Grades 4-8

A 2-hour exploration of the Reserve will focus on how plants and animals survive the cold winter months. Snowshoeing option is available for this program. (Please request snowshoeing option at the time of program booking.)

\$3.00/student

AASD Science Standards F.4.1; F.4.2; F.8.7; F.8.2



## Winter Survival Skills

Grades 4-8

During this 2-hour hands-on program, students will learn basic winter survival skills, including survival fire building, winter shelters, and how to dress appropriately for winter outdoor activities.

\*\* This program is offered January through March weather permitting. Please book this program **before** January 1st to assure program availability.

\$3.00/student

AASD Science Standards E.4.7; F.4.1; F.4.2; E.8.6



## Winter Wonderland Walk

Grades 4K-4

Take a winter nature hike with a naturalist. We will look for animal tracks and other winter animal signs, while walking through the beautiful, snowy Reserve. Snowshoeing option is available for this program. (Please request snowshoeing option at the time of program booking.)

\$3.00/student

\*\*This program must be coupled with a Wildlife Wonders program.

AASD Science Standards A.4.5; E.4.5; F.4.2; F.4.4; F.4.1



## About Your Field Trip...

### Appropriate dress for your program...

- Please have children dress in layers, including winter jacket and snow pants or snowsuit.
- Children should wear insulated winter boots. No open-toed shoes please!
- Children should wear hat, mittens, etc.
- **We will not go out if wind chills are at what we consider to be dangerous levels for the children.**
- **Programs will be modified and we will plan on being indoors as much as possible if the weather is too cold or dangerous for the children to be outside.**

### Guidelines to share with your students...

- Picking and collecting is prohibited. This includes plants, animals, insects, turtles, frogs, snakes, etc.
- Have fun and learn something too!

### Picnic and restroom facilities

- Please make arrangements to reserve the use of our picnic pavilion at the time of program scheduling.
- We are a "Leave No Trace" facility. Please plan to carry out your picnic trash.
- Restrooms are available in the Nature Center.